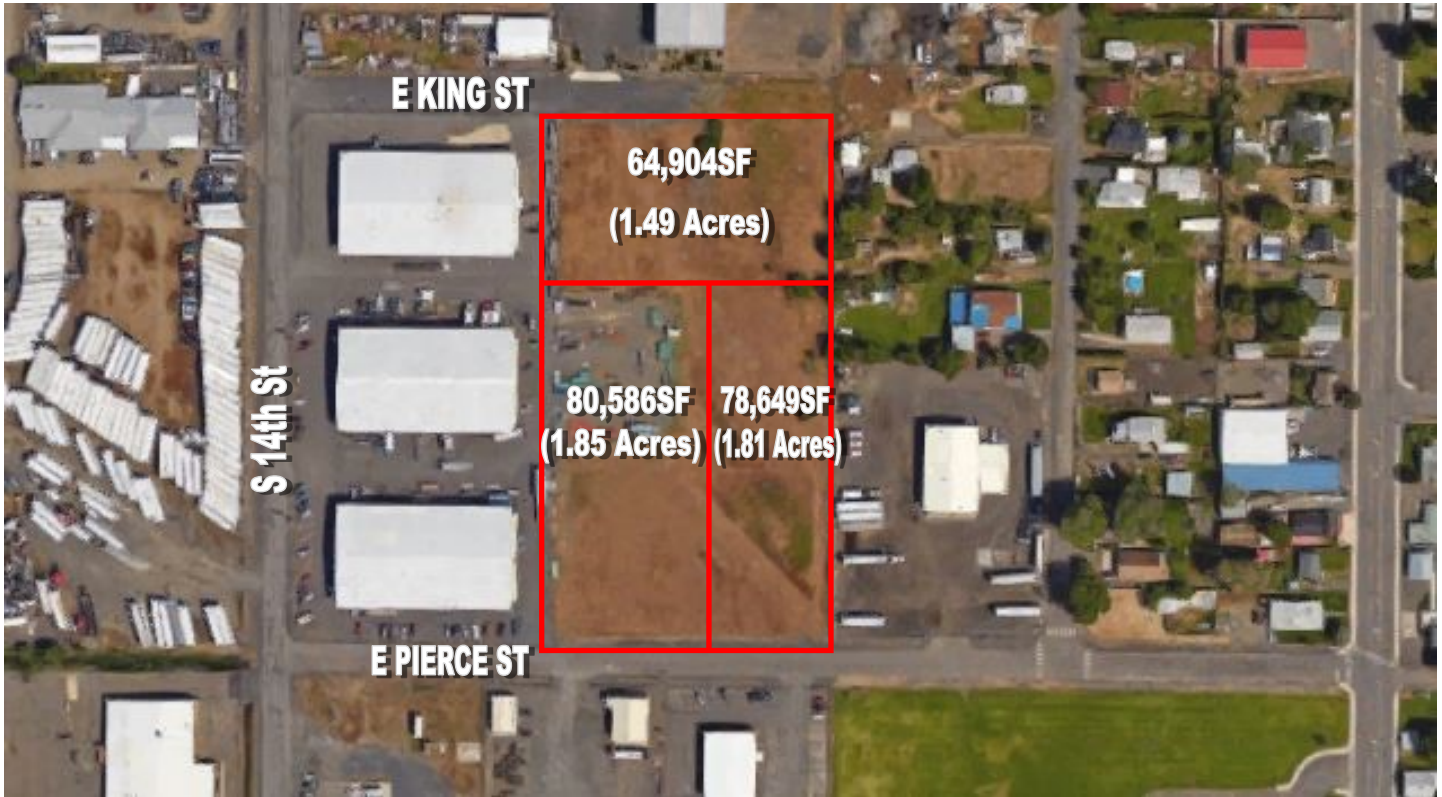


LAND AVAILABLE

XXXX S 14th Street
Yakima, WA



PROPERTY DETAILS

Available 224,139SF Total (5.15 Acres)

For Sale \$750,000

Parcel Numbers. 191332-21427, 21428, 21429

PROPERTY FEATURES

- Zoning: Commercial
- Close proximity to I-82
- High demand industrial area
- Utilities available
- Ideal for flex warehouse (replicate adjacent Industrial Park)



Paul Stelzer | (509) 248-4530 Office | (509) 494-3630 Cell | pstelzer@stelzerclark.com

Stelzer Clark, LLC | 1101 W Yakima Ave, #101 | Yakima, Washington 98902



www.stelzerclark.com

LAND AVAILABLE

XXXX S 14th Street
Yakima, WA



All square footage references are approximate. The information contained herein is from sources deemed reliable. It is provided without representation, warranty or guarantee, expressed or implied as to its accuracy. Prospective Buyer or Tenant should conduct an independent investigation and verification of all matters deemed to be material, including, but not limited to, statements of income and expenses. Consult your attorney or other professional advisor.



www.stelzerclark.com